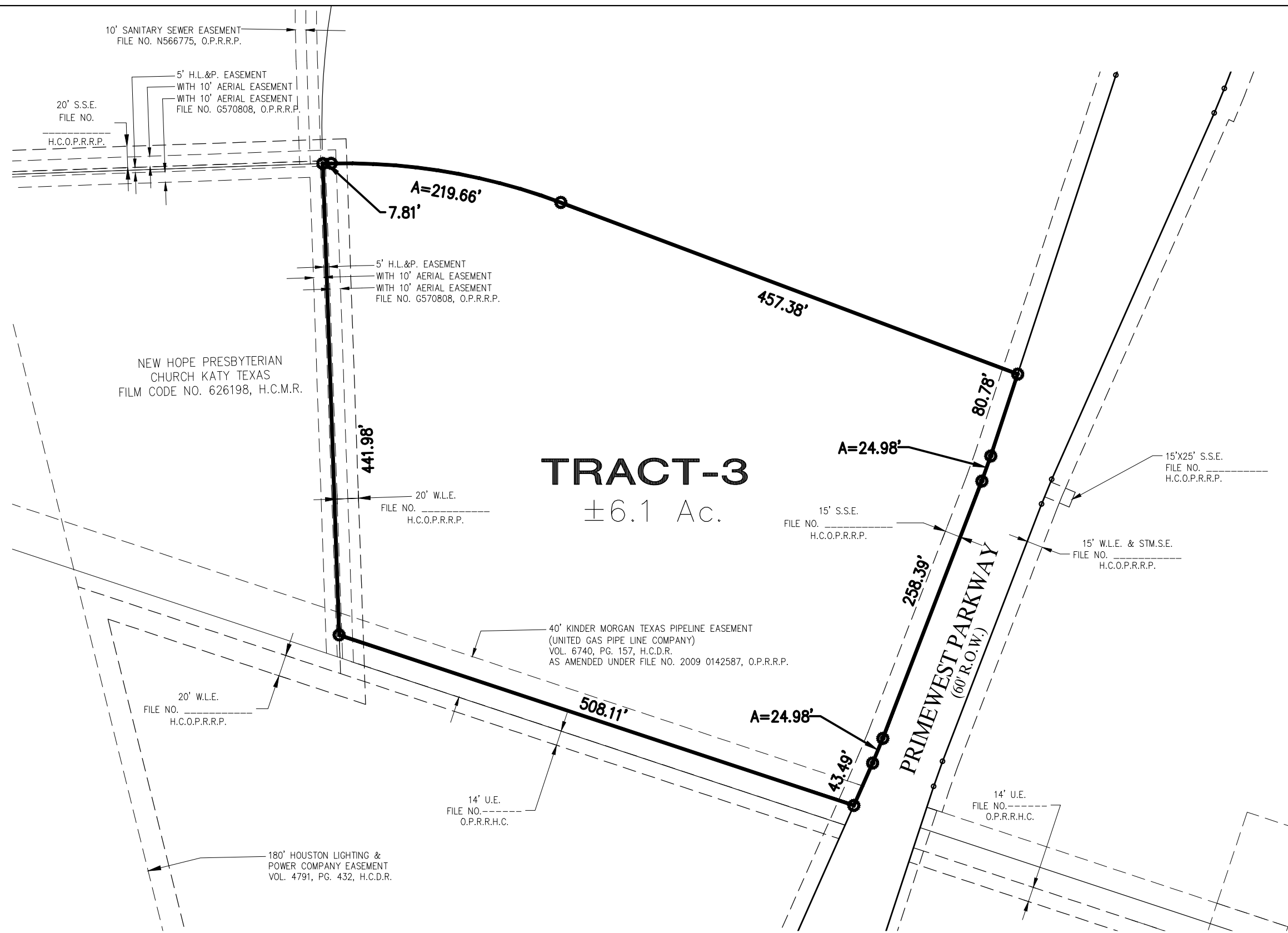


SCALE 1"=100'



# TRACT-3

±6.1 Ac.

DISCLAIMER:  
THIS MAP WAS PREPARED WITHOUT THE BENEFIT OF A TITLE REPORT, AND IS INTENDED FOR GENERAL PLANNING AND INFORMATIONAL PURPOSES ONLY. PATE ENGINEERS INC. HAS MADE NO INDEPENDENT SEARCH, EXAMINATION, OR ATTEMPT TO ABSTRACT THIS AREA AS TO MATTERS OF RECORD. PATE ENGINEERS INC. DOES NOT UNDERTAKE TO IMPLY OR EXPRESS ANY GUARANTEE OR OPINION AS TO THE COMPLETENESS, VALIDITY, OR EFFECT OF ANY OF THE INFORMATION SHOWN HEREON. THIS MAP IS SUBJECT TO FURTHER UPDATES AND REVISION. ALL INDICATED LAND USES ARE SUBJECT TO CHANGE BY THE DEVELOPER AND SHOULD NOT BE RELIED UPON AS ACCURATE BY POTENTIAL PURCHASERS.

**ParksideCapital**

**MASON CREEK**  
CORPORATE

PRELIMINARY LAYOUT  
FOR  
**TRACT-3**

**PATE ENGINEERS**  
TBPE F-002726

13333 N.W. Freeway, Suite 300 Houston, Tx. 77040  
Phone: 713-462-3178